



PONTOON QUICK SHADE GAZEBO INSTRUCTIONS

A quick and easy way to gain additional shaded area on your pontoon boat. Top accommodates both 96" and 102" width boats and is supported by shock-corded fiberglass pole framework that breaks down for convenient storage. After installation of permanently mounted hardware to your playpen rail, the Quick-Shade sets up and attaches easily and comes down in minutes. **This shade is designed to only be in place on your boat when at idle speed or when anchored. NEVER leave this product up and assembled on your boat when underway!**

You will need full access in and around the boat for initial installation. It can be done with the boat in the water, with care and best with a helper.

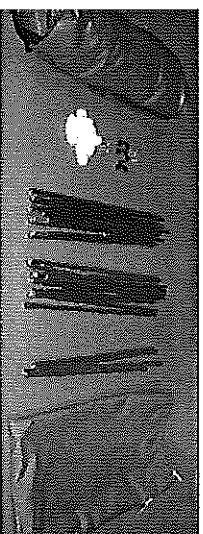
Quick-Shade Gazebo Includes:

- Shade Top
- Two 11 section frame pieces
- 1 - 4 section center frame piece
- 4 - Side mounting brackets
- 8 - #10 x 3/4" screws
- 4 - Eye straps
- 8 - #8 x 5/8" screws
- Storage bag and instructions



Tools Required:

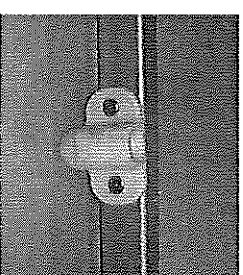
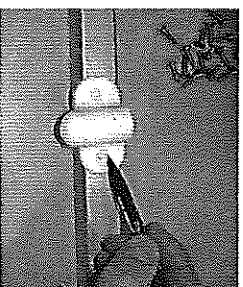
- Phillips screw driver
- Drill and 1/8" drill bit



Step 1: Check to be sure that all the components listed above are there. If not please call customer service at (518)773-9400

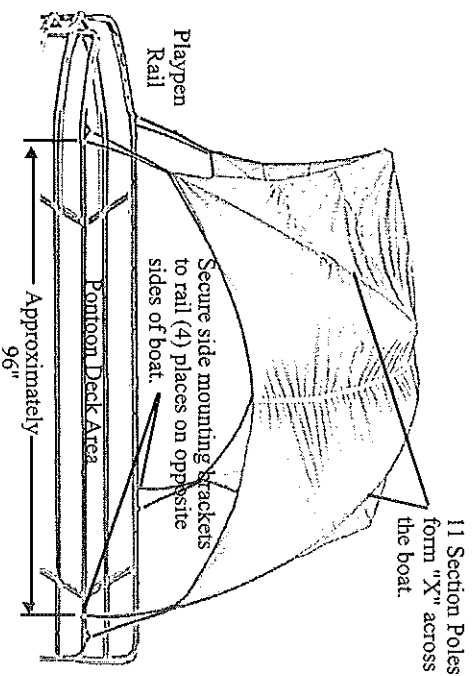
Step 2: Determine the position on the boat that you desire to shade with the top. The top itself provides approximately 8 feet of coverage bow to stern by the width of the playpen rail. This will vary by actual fit to your boat. Note that the mounting brackets will be permanently attached to the top playpen railing about 8 feet apart, on each side of the boat, so be sure that the area you choose is clear of entry way doors, Bimini Tops, other obstructions, etc.

Step 3: Attach the side mounting brackets. Position first bracket onto the side of your top playpen railing, make top (open socket portion) flush to the top of the railing. Mark screw locations with pen or marker, drill mounting holes with 1/8" bit. Secure bracket using two #10 x 3/4" screws and Phillips screw driver. Note: when mounting bracket near or at the end of the playpen area, leave 4"-6" from the radius if possible. Measure along the same railing 96" (eight feet) to locate the second mounting bracket. Position that bracket and secure to the rail as above.



Step 4: Secure the remaining two mounting brackets on the opposite side of the playpen railing, directly across from the first two brackets.

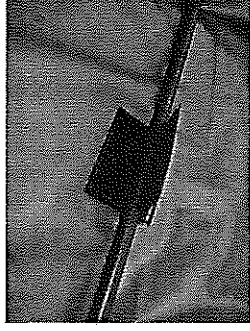
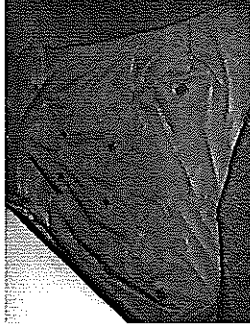
Step 5: Unfold and assemble together one of the 11 Section fiberglass shock-corded pole assemblies (feruled end from one section slips into the non-feruled end of the next and so on). Insert one end into a mounting bracket, gently bend pole to insert the other end (of the pole) into the bracket on the opposite side of the boat and diagonal to that mount. **BE CAREFUL AS YOU BEND THE POLE - IT WILL FLEX BACK STRAIGHT VERY QUICKLY IF NOT HELD SECURELY.** Repeat for the second 11 Section pole and the other mounting brackets. The bent poles should form an "X" across the boat at this point.



Step 6:

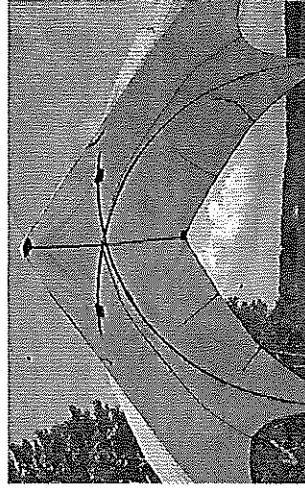
Unfold the Pontoon Shade Top. The under side has several pieces of hook and loop fastener stitched into the fabric, in the "X" formation, to align with the support poles. Place the top up and over the poles (Velcro side towards the poles) and

center it over the poles both from side to side and front to back. Peel each of the Velcro pieces apart, place over the pole at the location and hook the Velcro back onto itself to secure around the pole. Once all the Velcro pieces have been secured around the poles, re-align the top to the frame to properly center it.



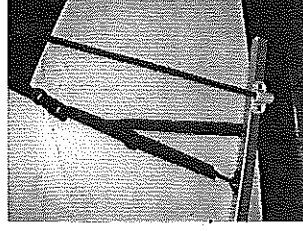
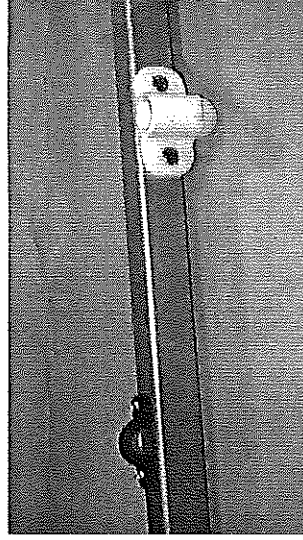
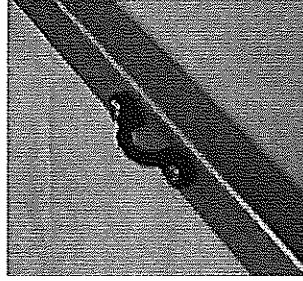
Step 7:

Unfold and assemble together the 4 Section Center Pole. The top has two pockets stitched into it, front and rear. From underside of the top, slide the pole over the two bent poles and position one end of the pole into the larger of the pockets. Slightly stretch the material to allow the other end of the pole to slide into the smaller of the pockets. This now supports the center section of the top.



Step 8:

Once again, it is necessary to slide the top fabric on the poles to get it centered and position properly. At each corner of the top, you will find an adjustable Tie-down Strap. These straps will keep the fabric top positioned onto the frame properly and help secure the pole ends into the mounting brackets. Starting at one corner, locate and position one of the plastic eye straps, on top (or on the side) of the playpen railing, approximately 4-6" from the mounting bracket at the corner. Mark and drill the mounting holes for the eye strap using the 1/8" drill bit. Secure the eye strap using two of the #8 x 5/8" screws. Take the Tie-down strap and adjust the length by pulling the webbing from the quick release buckle. Attach the "dog snap" to the eye end and pull the webbing to tighten the strap and secure. Don't over-tighten the strap as this will tend to pull the top out of position on the frame.



Repeat this procedure for each of the three corners for the top and frame. **NOTE:** that any "extra" webbing that may be present after each of the Tie-down straps have been installed and adjusted, may be cut off. Burn the raw edges of the webbing to prevent un-raveling.

The initial assembly of your Pontoon Gazebo is now complete. To remove the top for storage or when your boat is underway, simply follow these easy steps:

- Unhook the 4 dog snaps at each corner of the top at the tie-down straps.
- Release the Hook & Loop fasteners from around the poles on the underside of the top.
- Remove the center (4 section) Pole from the underside of the top, disassemble and fold up pole sections.
- Pull the top down off the two main frame poles, fold up and place aside (for long term storage, never pack up a wet or damp Top).
- Gently pull one end of one pole from the mounting bracket. Gently allow the pole to straighten out. **BE VERY CARE**

FUL AS YOU MANUEVER THE POLE, IT WILL FLEX BACK STRAIGHT VERY QUICKLY IF NOT HELD SECURELY. Disassemble and fold up the pole sections. Repeat for the second 11 Section pole.

- A convenient storage bag has been provided for your Pontoon Gazebo.

ADDITIONAL WARRANTY INFORMATION

TAYLOR MAKES NO EXPRESS OR IMPLIED WARRANTIES OTHER THAN WARRANTIES SET FORTH HEREIN, INCLUDING WITHOUT LIMITATION, THE WARRANTIES OF MERCHANTABILITY, FITNESS FOR A PARTICULAR PURPOSE, OR FROM ANY COURSE OF DEALING OR TRADE USAGE.

TAYLOR SHALL NOT BE LIABLE FOR SPECIAL, INDIRECT, INCIDENTAL, PUNITIVE OR CONSEQUENTIAL DAMAGES, INCLUDING WITHOUT LIMITATION, DAMAGES FOR LOSS OF OPPORTUNITY OR BUSINESS PROFITS, BUSINESS INTERRUPTION OR ANY OTHER LOSS EVEN IF TAYLOR HAS BEEN ADVISED OF THE POSSIBILITY OF SUCH DAMAGES.

IN NO EVENT SHALL TAYLOR BE LIABLE FOR ANY AMOUNT IN EXCESS OF THE PURCHASE PRICE PAID.